

prio EC



prio 150EC

prio 160EC
prio 200EC
prio 250EC
prio 250EC-L

- EC-motors, high level of efficiency
- Speed-controllable
- Integrated motor protection
- Can be installed in any position
- Compact design and low sound level
- Potentiometer included for ease of commissioning

EC Circular duct fans

Casing

Airtight, compact casing made from a composite material (PP TD20). Leakage rate compliant with tightness class C, according to EN 12237:2003.

Motor

Energy-saving, highly efficient EC external rotor motors.

Impeller geometry

The fans have aerodynamically optimized impellers and guide vanes with integrated external rotor motors.

Output control

100 % controllable via a 0-10 V signal.

Motor protection

The motor protection is integrated in the motor electronics.

You can find more information in our online catalogue on www.systemair.com

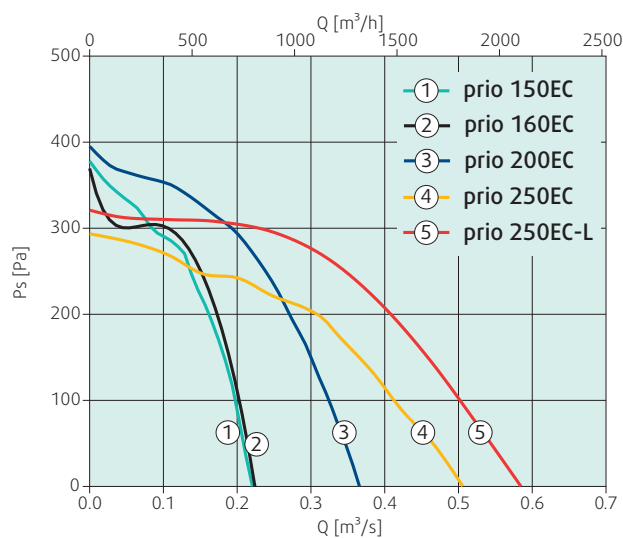
Accessories

CB
Duct heater
Page 369CBM
Duct heater
Page 370FFR
Filter cassette
Page 367FGR
Filter cassette
Page 366FK
Fast clamp
Page 364IGC-LI
Intake grid
Page 364IGK
Intake grid
Page 365LDC
Silencer
Page 368RSK
Back draft damper
Page 364SG
Protection guard
Page 365VK
Louvre shutter
Page 365VKK
Back draft damper
Page 366VBC
Water heating battery
Page 371VBF
Water heating battery
Page 372CWK
Water cooling battery
Page 374

Electrical accessories

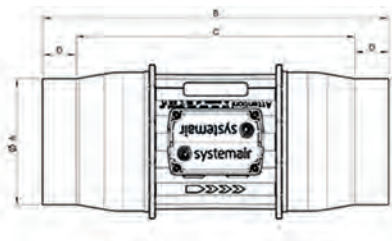
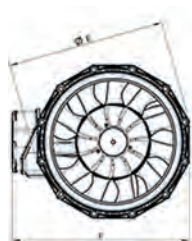
EC-Vent
Room unit
Page 342MTP
Speed control
Page 336MTV
Speed control
Page 336REV
On/off switch
Page 360

Quick selection

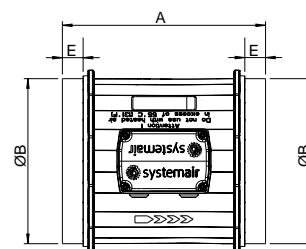
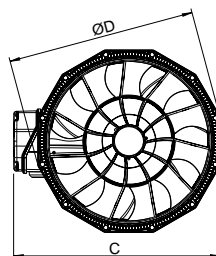


Dimensions

prio 150EC



prio 160EC - 250EC-L



| prio EC | ØA | B | C | D | ØE | F |
|------------|-----|-----|-----|----|-----|-----|
| prio 150EC | 149 | 412 | 332 | 40 | 187 | 211 |

| prio EC | A | ØB | C | ØD | E |
|--------------|-----|-----|-----|-----|----|
| prio 160EC | 220 | 159 | 211 | 187 | 25 |
| prio 200EC | 245 | 199 | 249 | 227 | 25 |
| prio 250EC | 300 | 249 | 303 | 284 | 30 |
| prio 250EC-L | 300 | 249 | 303 | 284 | 30 |



Space-saving: Thanks to its compact dimensions, the in-line circular duct fan can be easily integrated into the duct system. An elegant in-line solution.

Technical data

| prio EC | | prio 150EC | prio 160EC | prio 200EC | prio 250EC | prio 250EC-L |
|--|---------|------------|------------|------------|------------|--------------|
| Art. no. | | 78184 | 78185 | 78186 | 78187 | 78188 |
| Voltage | V | 1x230 | 1x230 | 1x230 | 1x230 | 1x230 |
| Frequency | Hz | 50/60 | 50/60 | 50/60 | 50/60 | 50/60 |
| Input power (P1) | W | 75.7 | 77.1 | 117 | 124 | 170 |
| Current | A | 0.642 | 0.659 | 0.921 | 0.901 | 1.34 |
| Max. temperature of transported air | °C | 55 | 55 | 55 | 55 | 55 |
| Sound pressure level (1 m)* | dB(A) | 44 | 43 | 48 | 42 | 46 |
| Sound pressure level (3 m)* | dB(A) | 34.5 | 33.5 | 38.5 | 32.5 | 36.5 |
| Weight | kg | 1.9 | 1.6 | 2.4 | 3.1 | 3.8 |
| Insulation class | | B | B | B | B | B |
| Motor protection | | integral | integral | integral | integral | integral |
| Speed control, stepless ⁽¹⁾ | electr. | MTP 10 | MTP 10 | MTP 10 | MTP 10 | MTP 10 |

(*) Free field conditions

(1) Systemair recommendation.

prio EC



prio 355EC

prio 315EC
prio 400EC
prio 400EC 3~

- High efficiency and low SFP in a real working point
- Compact design and low sound level
- Airtight design
- Potentiometer included for ease of commissioning
- Simple to install, mounting brackets included
- Integrated motor protection

Accessories

CB
Duct heater
Page 369CBM
Duct heater
Page 370FFR
Filter cassette
Page 367FGR
Filter cassette
Page 366FK
Fast clamp
Page 364IGC-LI
Intake grid
Page 364IGK
Intake grid
Page 365LDC
Silencer
Page 368RSK
Back draft damper
Page 364SG
Protection guard
Page 365VK
Louvre shutter
Page 365VKK
Back draft damper
Page 366VBC
Water heating battery
Page 371VBF
Water heating battery
Page 372CWK
Water cooling battery
Page 374

Electrical accessories

EC-Vent
Room unit
Page 342MTP
Speed control
Page 336MTV
Speed control
Page 336REV
On/off switch
Page 360

EC Circular duct fans

Casing

Airtight, compact casing made from sheet metal.
Leakage rate compliant with tightness class C, according to EN 12237:2003.

Motor

Energy-saving, highly efficient EC external rotor motors.

Impeller geometry

The fans have aerodynamically optimized impellers and guide vanes with integrated external rotor motors.

Output control

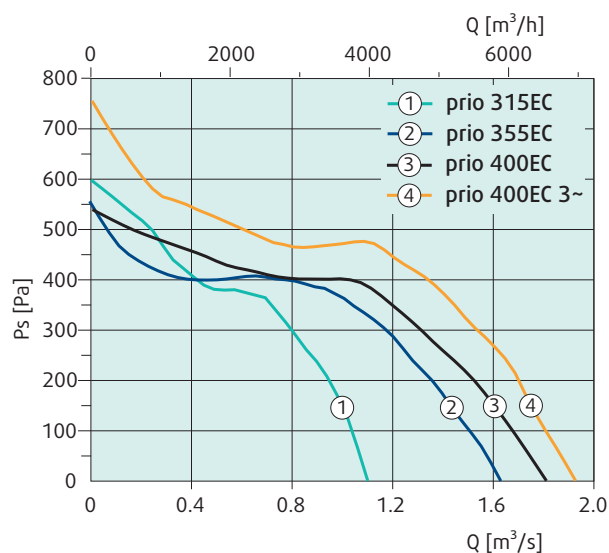
100 % controllable via a 0-10 V signal.

Motor protection

The motor protection is integrated in the motor electronics.

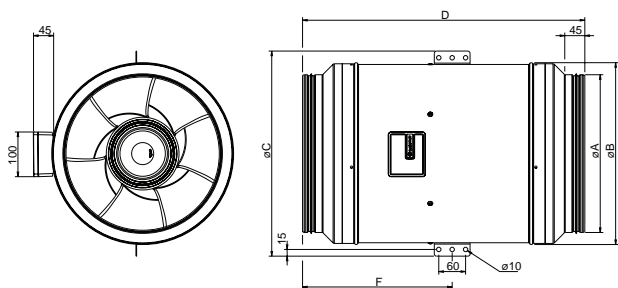
You can find more information in our online catalogue on www.systemair.com

Quick selection

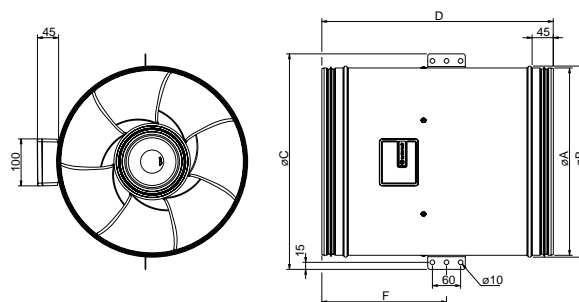


Dimensions

prio 355EC



prio 315EC, 400EC, 400EC-L



| prio EC | ØA | ØB | ØC | D | F |
|------------|-----|-----|-----|-----|-----|
| prio 355EC | 353 | 407 | 459 | 632 | 335 |

| prio EC | ØA | ØB | ØC | D | F |
|---------------|-----|-----|-----|-----|-----|
| prio 315EC | 314 | 322 | 375 | 407 | 205 |
| prio 400EC | 399 | 407 | 459 | 493 | 266 |
| prio 400EC 3~ | 399 | 407 | 459 | 493 | 266 |

Technical data

| prio EC | | prio 315 EC | prio 355 EC | prio 400 EC | prio 400 EC 3~ |
|--|---------|-------------|-------------|-------------|----------------|
| Art. no. | | 87795 | 87999 | 87979 | 93266 |
| Voltage | V | 1x230 | 1x230 | 1x230 | 3x400 |
| Frequency | Hz | 50/60 | 50/60 | 50/60 | 50/60 |
| Input power (P1) | W | 528 | 738 | 748 | 1168 |
| Current | A | 2.32 | 3.24 | 3.26 | 1.8 |
| Max. temperature of transported air | °C | 55 | 55 | 55 | 55 |
| * when speed-controlled | °C | 55 | 55 | 55 | 55 |
| Sound pressure level (1 m)* | dB(A) | 52.5 | 55.9 | 54.5 | 55.2 |
| Sound pressure level (3 m)* | dB(A) | 43.0 | 46.4 | 45 | 45.7 |
| Weight | kg | 8.52 | 15.3 | 13.4 | 13.3 |
| Insulation class | | F | F | F | F |
| Motor protection | | Integral | Integral | Integral | Integral |
| Speed control, stepless ⁽¹⁾ | electr. | MTP 10 | MTP 10 | MTP 10 | MTP 10 |

(*) Free field conditions

(1) Systemair recommendation.

prio EC

prio 450 EC
prio 500 EC

- EC-motors, high level of efficiency
- Speed-controllable
- Integrated motor protection
- Supplied with mounting bracket
- Potentiometer included for ease of commissioning

EC Circular duct fans

Casing

Airtight, compact casing made from galvanized steel. Leakage rate compliant with tightness class C, according to EN 12237:2003.

Motor

Energy-saving, highly efficient EC external rotor motors.

Impeller geometry

The fan has a mixed flow impeller which reduces the external dimensions of the fan

Output control

100 % controllable via a 0-10 V signal.

Motor protection

The motor protection is integrated in the motor electronics.

You can find more information in our online catalogue on www.systemair.com

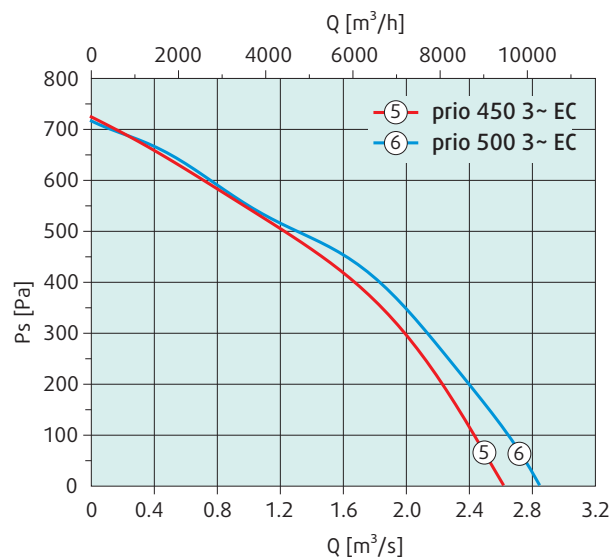
Accessories

CB
Duct heater
Page 369CBM
Duct heater
Page 370FFR
Filter cassette
Page 367FGR
Filter cassette
Page 366FK
Fast clamp
Page 364IGC-LI
Intake grid
Page 364IGK
Intake grid
Page 365LDC
Silencer
Page 368RSK
Back draft damper
Page 364SG
Protection guard
Page 365VK
Louvre shutter
Page 365VKK
Back draft damper
Page 366VBC
Water heating battery
Page 371VBF
Water heating battery
Page 372CWK
Water cooling battery
Page 374

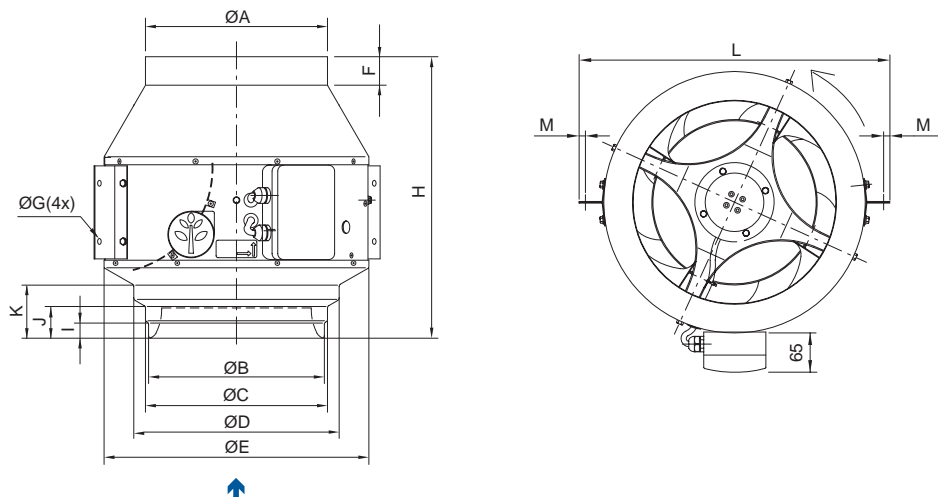
Electrical accessories

EC-Vent
Room unit
Page 342MTP
Speed control
Page 336MTV
Speed control
Page 336REV
On/off switch
Page 360

Quick selection



Dimensions



| prio EC | ØA | ØB | ØC | ØD | ØE | F | ØG | H | I | J | K | L | M |
|----------------|-----|----|-----|-----|-----|----|----|-----|---|----|-----|-----|---|
| prio 450 3~ EC | 450 | - | 450 | 500 | 663 | 46 | 12 | 686 | - | 50 | 121 | 742 | 9 |
| prio 500 3~ EC | 500 | - | 450 | 500 | 663 | 46 | 12 | 642 | - | 50 | 121 | 742 | 9 |

Technical data

| prio EC | | prio 450 3~ EC | prio 500 3~ EC |
|--|---------|----------------|----------------|
| Art. no. | | 11562 | 11563 |
| Voltage | V | 3x400 | 3x400 |
| Frequency | Hz | 50/60 | 50/60 |
| Input power (P1) | W | 1872 | 1848 |
| Current | A | 2.91 | 2.83 |
| Max. temperature of transported air | °C | 40 | 40 |
| * when speed-controlled | °C | 60 | 60 |
| Sound pressure level (1 m)* | dB(A) | 65.3 | 64.1 |
| Sound pressure level (3 m)* | dB(A) | 55.8 | 54.6 |
| Weight | kg | 28.6 | 28.2 |
| Insulation class | | F | F |
| Motor protection | | Integral | Integral |
| Speed control, stepless ⁽¹⁾ | electr. | MTP 10 | MTP 10 |

(*) Free field conditions

(1) Systemair recommendation.